

NOBLELIFT

NEW Noblelift Products  
ARRIVAL

# A Series Internal Combustion Forklift Trucks

8.5/9.0/10.0t



NOBLELIFT INTELLIGENT EQUIPMENT CO., LTD.

## A Series Internal Combustion Forklift Trucks

### 8.5/9.0/10.0t

The A Series 8.5–10t IC Forklifts are heavy-duty counterbalanced trucks independently developed by Noblift, featuring advanced technology, modern family-style design, a 6-cylinder fuel-efficient engine, enhanced ergonomics, reinforced mast structure, and a highly reliable cooling system. This makes them the preferred choice for demanding applications.

- The vehicle exterior follows the A Series family design, adopting a standard wheelbase, small turning radius, and flexible operation.
- Standard configuration adopts a 6-cylinder National IV engine with stronger power, lower noise, good response at low to medium speeds, and smooth start-up, extending overhaul intervals under heavy-duty conditions.
- The standard 10t truck has a self-weight of 13.7t, meeting the needs of stone, steel, timber, ports, and rental markets without additional options or modifications.
- Heavy-duty transmission for port applications, paired with a reinforced hub reduction drive axle to support intensive operations. Steering axle kingpin bearings adopt tapered roller bearings for the first time in the industry, extending steering axle life.
- Reinforced design of frame and mast structures meets heavy-duty operating requirements.
- Reinforced mast for port applications, featuring a full-width load backrest aligned with the truck frame, eight main rollers, six side rollers, and a heavy-duty fork positioner cylinder to withstand demanding heavy-duty and unbalanced loads.
- Optimized cooling duct in counterweight with widened plate-fin radiator significantly improves vehicle thermal balance, ensuring reliable engine and transmission operation.
- Standard hydraulic oil cooler and return oil filter ensure hydraulic system reliability under continuous heavy-duty operations.
- Floating seat, audio-visual alarm, and color display instrument are all standard.
- Floorboard and side panels removable without tools, engine hood opens 80°, providing convenient and fast maintenance.



### Color Display



Smart LCD display with real-time vehicle status monitoring.

### Wide-View Reinforced Mast



10t model equipped with 8 main and 6 side rollers, optimized for heavy-duty use.

### Independent ECU Box



ECU, fuse box, and preheating relays integrated for easy service.

### Exhaust System



Convenient removal from counterweight side for maintenance.

### Cup Holder & Pen Holder



Stylish cup holder and pen storage.

### Large Hood Opening



80° engine hood opening for easy access.

### Full LED Lighting



Full LED lighting system.

### Easy Maintenance



Simplified servicing of key components.

### Optional A/C Cabin



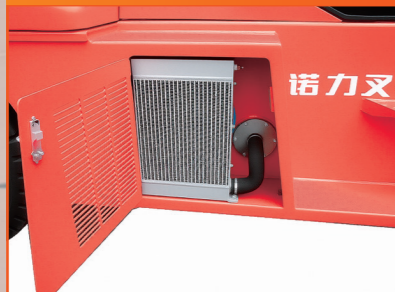
Air conditioning available for enhanced comfort.

### Reinforced Steering Axle



With tapered roller bearings.

### Hydraulic Oil Cooler



Side-mounted cooler reduces oil temperature.

### Heavy-Tread Tires



Stronger grip and durability.





# A Series Internal Combustion Forklift Trucks Mast Parameters Table

No.20250829(V0)

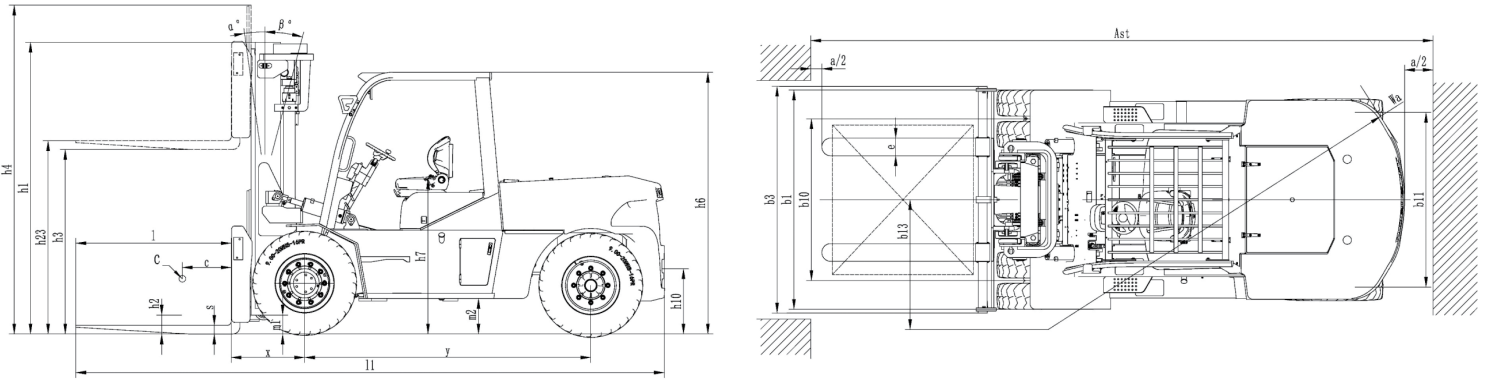
Designation	Mast table	Lift height	Mast height						Free lift				Front overhang		Tilt angle	Load capacity			
			Closed mast height	Extended mast height				Without load backrest		With load backrest		mm		forward/backward		Capacity table(kg) C=600mm without attachment			
				mm		mm		mm		mm		mm			8.5t	9t	10t		
			mm	8.5t/9t	10t	8.5t/9t	10t	8.5t/9t	10t	8.5t/9t	10t	8.5t/9t	10t	8.5t/9t	10t	(°)	kg	kg	kg
			mm	8.5t/9t	10t	8.5t/9t	10t	8.5t/9t	10t	8.5t/9t	10t	8.5t/9t	10t	8.5t/9t	10t	(°)	kg	kg	kg
Two-stage ZT	A85/90/100/M250	2500	2450	2600	3750	3750	3750	3750	190	200	700	710	6/12	8500	9000	10000			
	A85/90/100/M270	2700	2550	2700	3950	3950	3950	3950	190	200	700	710	6/12	8500	9000	10000			
	A85/90/100/M300	3000	2700	2850	4250	4250	4250	4250	190	200	700	710	6/12	8500	9000	10000			
	A85/90/100/M330	3300	2850	3000	4550	4550	4550	4550	190	200	700	710	6/12	8500	9000	10000			
	A85/90/100/M350	3500	2950	3100	4750	4750	4750	4750	190	200	700	710	6/12	8500	9000	10000			
	A85/90/100/M375	3750	3075	3225	5000	5000	5000	5000	190	200	700	710	6/12	8500	9000	10000			
	A85/90/100/M400	4000	3250	3400	5250	5250	5250	5250	190	200	700	710	6/12	8500	9000	10000			
	A85/90/100/M425	4250	3375	3525	5500	5500	5500	5500	190	200	700	710	6/12	8000	9000	10000			
	A85/90/100/M450	4500	3500	3650	5750	5750	5750	5750	190	200	700	710	6/12	7500	8500	10000			
	A85/90/100/M475	4750	3625	3775	6000	6000	6000	6000	190	200	700	710	6/6	7000	8000	9500			
	A85/90/100/M500	5000	3750	3900	6250	6250	6250	6250	190	200	700	710	6/6	6500	7800	9000			
	A85/90/100/M550	5500	4050	4200	6750	6750	6750	6750	190	200	700	710	6/6	6000	7500	8500			
	A85/90/100/M600	6000	4300	4450	7250	7250	7250	7250	190	200	700	710	6/6	5500	7300	8000			
A85/90/100/M650	6500	4650	4700	7750	7750	7750	7750	190	200	700	710	6/6	5000	6800	7500				
Two-stage Full/Free Lift	A85/90/100/U250	2500	2450	2600	3750	3750	3750	3750	1250	1215	700	710	6/12	8500	9000	10000			
	A85/90/100/U270	2700	2550	2700	3950	3950	3950	3950	1350	1315	700	710	6/12	8500	9000	10000			
	A85/90/100/U300	3000	2700	2850	4250	4250	4250	4250	1500	1465	700	710	6/12	8500	9000	10000			
	A85/90/100/U330	3300	2850	3000	4550	4550	4550	4550	1650	1615	700	710	6/12	8500	9000	10000			
	A85/90/100/U350	3500	2950	3100	4750	4750	4750	4750	1750	1715	700	710	6/12	8500	9000	10000			
	A85/90/100/U375	3750	3075	3225	5000	5000	5000	5000	1875	1840	700	710	6/12	8500	9000	10000			
	A85/90/100/U400	4000	3250	3400	5250	5250	5250	5250	2050	2015	700	710	6/12	8500	9000	10000			
	A85/90/100/U425	4250	3375	3525	5500	5500	5500	5500	2175	2140	700	710	6/12	8000	9000	10000			
	A85/90/100/U450	4500	3500	3650	5750	5750	5750	5750	2300	2265	700	710	6/12	7500	8500	10000			
	A85/90/100/U475	4750	3625	3775	6000	6000	6000	6000	2425	2390	700	710	6/6	7000	8000	9500			
	A85/90/100/U500	5000	3750	3900	6250	6250	6250	6250	2550	2515	700	710	6/6	6500	7800	9000			
	A85/90/100/U550	5500	4050	4200	6750	6750	6750	6750	2850	2815	700	710	6/6	6000	7500	8500			
	A85/90/100/U600	6000	4300	4450	7250	7250	7250	7250	3100	3065	700	710	6/6	5500	7300	8000			
Three-stage Full/Free Lift	A85/90/100/N360	3600	2450	2500	4850	4850	4850	4850	1200	1150	740	750	6/12	6800	8000	9500			
	A85/90/100/N400	4000	2575	2680	5250	5250	5250	5250	1330	1280	740	750	6/12	6800	8000	9500			
	A85/90/100/N435	4350	2700	2800	5600	5600	5600	5600	1450	1400	740	750	6/12	6800	8000	9500			
	A85/90/100/N450	4500	2750	2850	5750	5750	5750	5750	1500	1450	740	750	6/6	6800	8000	9500			
	A85/90/100/N480	4800	2850	2950	6050	6050	6050	6050	1600	1550	740	750	6/6	6800	8000	9500			
	A85/90/100/N500	5000	2950	3015	6250	6250	6250	6250	1700	1615	740	750	6/6	6300	8000	9500			
	A85/90/100/N550	5500	3075	3205	6750	6750	6750	6750	1830	1805	740	750	6/6	5900	7500	8500			
	A85/90/100/N600	6000	3375	3405	7250	7250	7250	7250	2130	2005	740	750	6/6	5300	7000	8000			
	A85/90/100/N650	6500	3600	3480	7750	7750	7750	7750	2350	2170	740	750	6/6	4800	6500	7500			
	A85/90/100/N700	7000	3750	3835	8250	8250	8250	8250	2500	2435	740	750	6/6	4300	5600	7000			

● Integral Side Shifter (Optional) – Reduces weight by ~300kg.

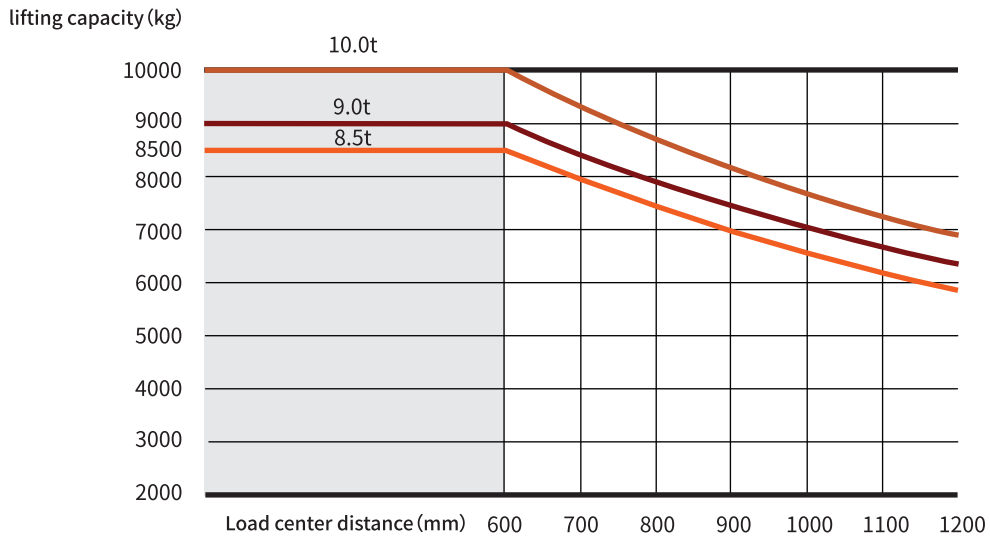
## Engine Configuration Table

Engine Description	Quan Chai S65-130C41 Turbocharged Intercooled High-Pressure Common Rail+ EGR+DOC+DPF	Yu Chai YCA05115-S500 Turbocharged Intercooled High-Pressure Common Rail SCR + DOC + DPF	Isuzu 6BG1QC-02 In-line Pump
Engine Model	Q3	Y1	W2
Power Type	Diesel	Diesel	Diesel
Emission Standard	China IV	Euro V	China I
Power	95.6/2200	85/2200	82.4/2000
Torque	540/1400-1650	500/1300-1500	417/1500
Displacement	6.67	4.837	5.785
Applicable Capacity	8.5-10t	8.5-10t	8.5-10t

## Structure diagram



## Load curve diagram



## NOBLELIFT CHINA

Add:528 Changzhou Road, Taihu Sub-district,  
Changxing, Zhejiang 313100 China  
Tel:86-572-6210817 6210311  
Fax:86-572-6210777 6128612  
Email: info@noblelift.com  
Http: www.noblelift.com www.noblelift.cn



Official website



Our Wechat

All specifications and figures are subject to change without notice for improvement.